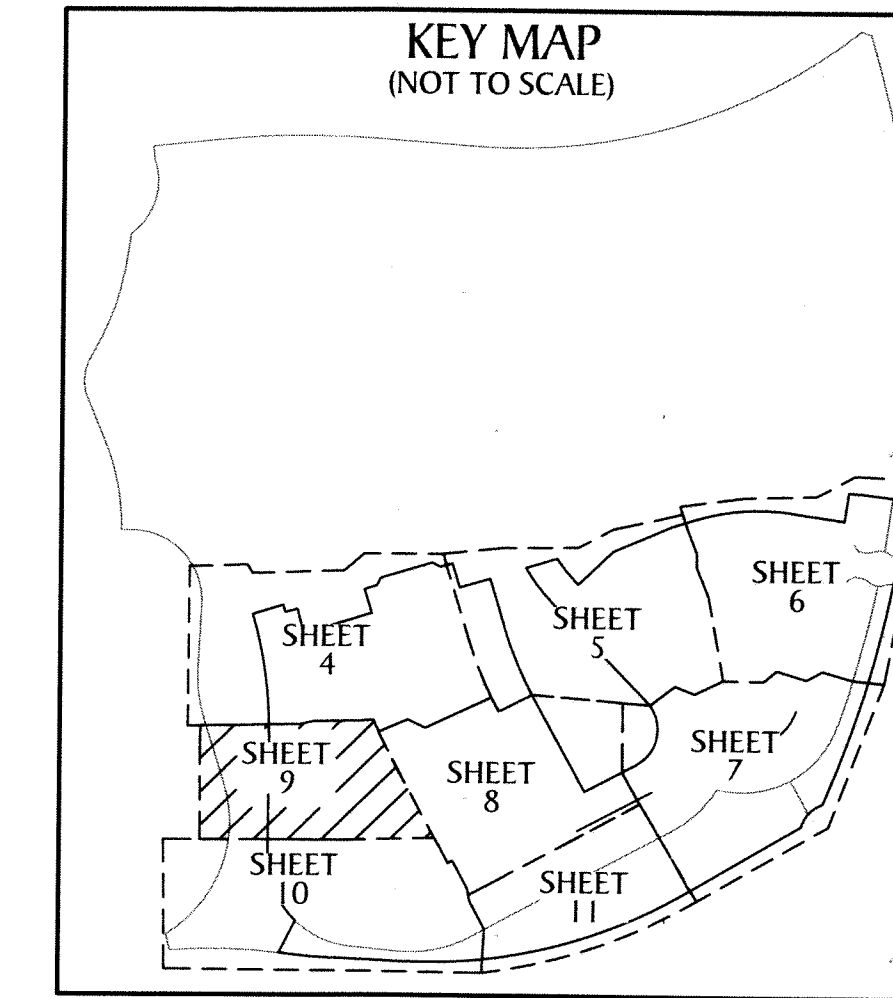
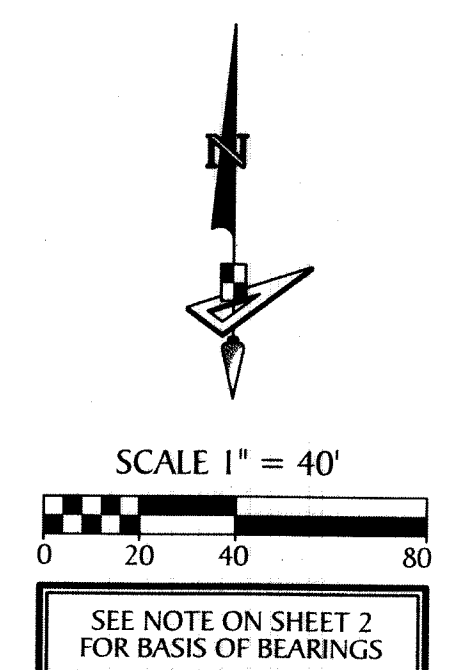


ORCHARDS OF WESTLAKE - PHASE II

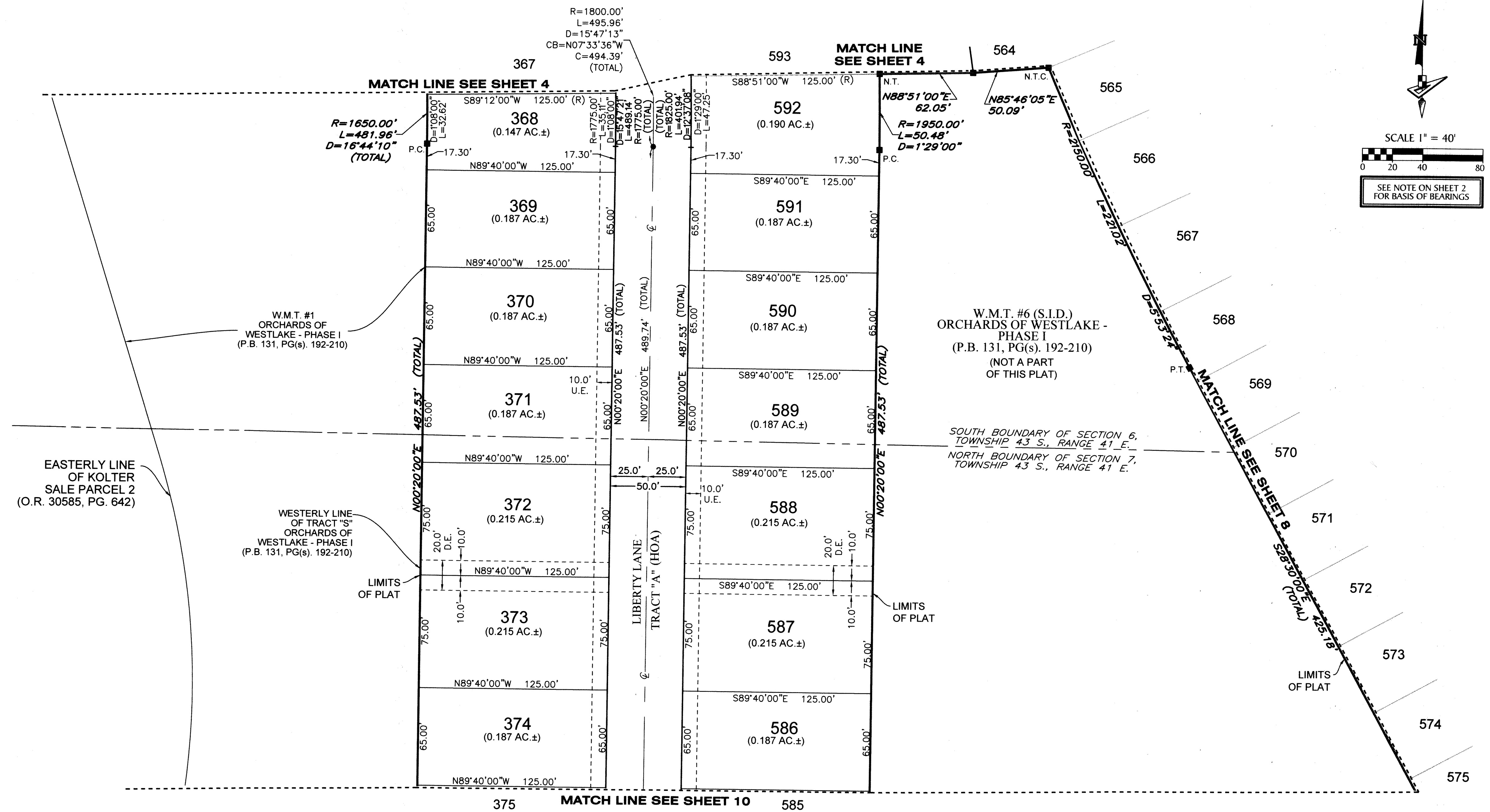
BEING A REPLAT OF TRACT "S", A PORTION OF OPEN SPACE TRACT #11, OPEN SPACE TRACT # 12 AND WATER MANAGEMENT TRACT #9, ORCHARDS OF WESTLAKE - PHASE I, PLAT BOOK 131, PAGES 192 THROUGH 210, INCLUSIVE, OF THE PUBLIC RECORDS OF PALM BEACH COUNTY, FLORIDA, WITHIN SECTIONS 5, 6, 7 AND 8, ALL IN TOWNSHIP 43 SOUTH, RANGE 41 EAST, CITY OF WESTLAKE, PALM BEACH COUNTY, FLORIDA.



96



- LEGEND**
- P.O.B. ----- POINT OF BEGINNING
 - P.O.C. ----- POINT OF COMMENCEMENT
 - P.B. ----- PLAT BOOK
 - D.B. ----- DEED BOOK
 - O.R./O.R.B. ----- OFFICIAL RECORDS BOOK
 - PG./PG(s) ----- PAGE(S)
 - NAD ----- NORTH AMERICAN DATUM
 - W.M.T. ----- WATER MANAGEMENT TRACT
 - O.S.T. ----- OPEN SPACE TRACT
 - P.B.C. ----- PALM BEACH COUNTY
 - U.E. ----- UTILITY EASEMENT
 - D.E. ----- DRAINAGE EASEMENT
 - L.M.A.E. ----- LAKE MAINTENANCE ACCESS EASEMENT
 - 7-43-41 ----- SECTION-TOWNSHIP-RANGE
 - R ----- RADIUS
 - L ----- ARC LENGTH
 - D ----- DELTA ANGLE
 - CB ----- CHORD BEARING
 - C ----- CHORD
 - N.T. ----- NON-TANGENT
 - N.T.C. ----- NON-TANGENT CURVATURE
 - P.C. ----- POINT OF CURVATURE
 - P.T. ----- POINT OF TANGENCY
 - R.I. ----- RADIAL INTERSECTION
 - R/W ----- RIGHT-OF-WAY
 - (R) ----- RADIAL
 - (NR) ----- NON-RADIAL
 - HOA ----- HOMEOWNERS ASSOCIATION
 - S.I.D. ----- SEMINOLE IMPROVEMENT DISTRICT
 - PRM ----- PERMANENT REFERENCE MONUMENT
 - ----- PERMANENT CONTROL POINT
 - ----- FOUND PERMANENT REFERENCE MONUMENT
 - ----- SET 4"x4" CONCRETE MONUMENT WITH 2" ALUMINUM DISK STAMPED "PRM LB 7768"



EASTERLY LINE OF KOLTER SALE PARCEL 2 (O.R. 30585, PG. 642)

W.M.T. #1 ORCHARDS OF WESTLAKE - PHASE I (P.B. 131, PG(s). 192-210)

WESTERLY LINE OF TRACT "S" ORCHARDS OF WESTLAKE - PHASE I (P.B. 131, PG(s). 192-210)

LIMITS OF PLAT

LIBERTY LANE TRACT "A" (HOA)

LIMITS OF PLAT

SOUTH BOUNDARY OF SECTION 6, TOWNSHIP 43 S., RANGE 41 E.
NORTH BOUNDARY OF SECTION 7, TOWNSHIP 43 S., RANGE 41 E.

W.M.T. #6 (S.I.D.) ORCHARDS OF WESTLAKE - PHASE I (P.B. 131, PG(s). 192-210) (NOT A PART OF THIS PLAT)

LIMITS OF PLAT

LIMITS OF PLAT

LIMITS OF PLAT

LIMITS OF PLAT

LIMITS OF PLAT

LIMITS OF PLAT

LIMITS OF PLAT

LIMITS OF PLAT

LIMITS OF PLAT

LIMITS OF PLAT

LIMITS OF PLAT